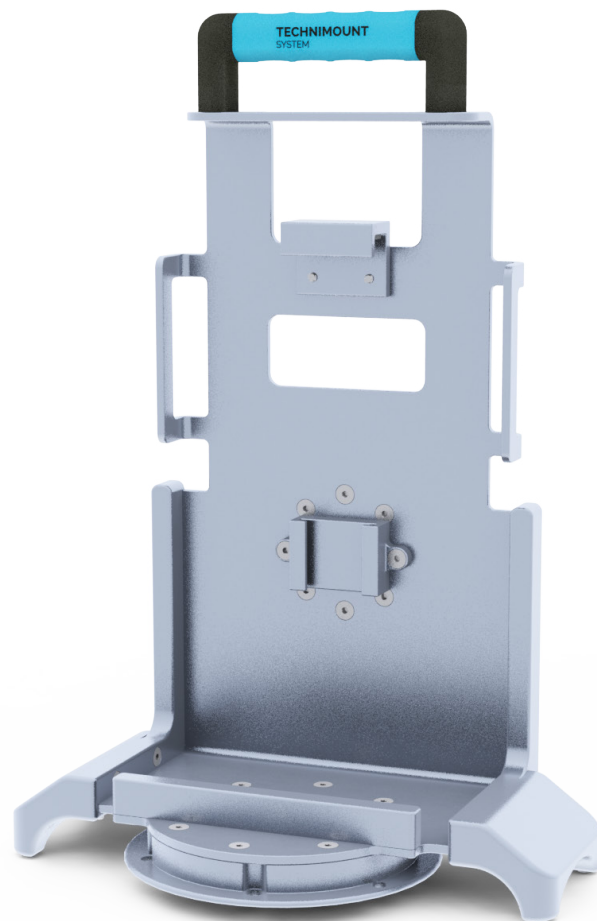




**TECHNIMOUNT**  
EMS®

## **BRACKET PRO SERIE® 26**

MOUNTING SYSTEM FOR THE AEV®/EMV+® VENTILATOR



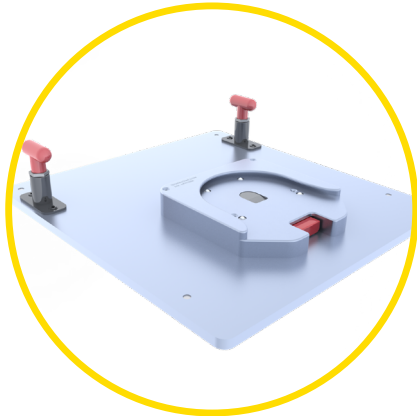
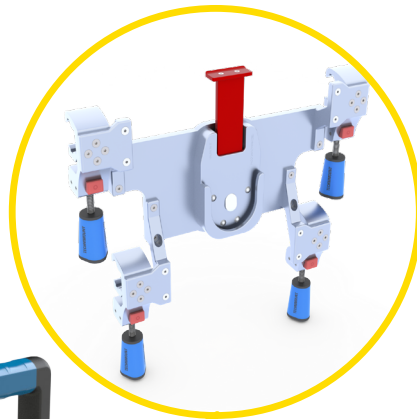
# BRACKET PRO SERIE® 26

## POTENTIAL CONFIGURATIONS

Safety MD Transporter



Wall Mount Systems (EU)



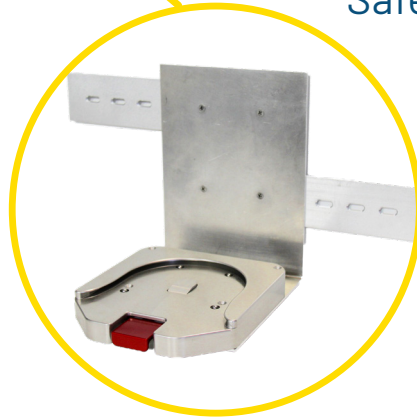
Floor Mount  
Air Ambulance



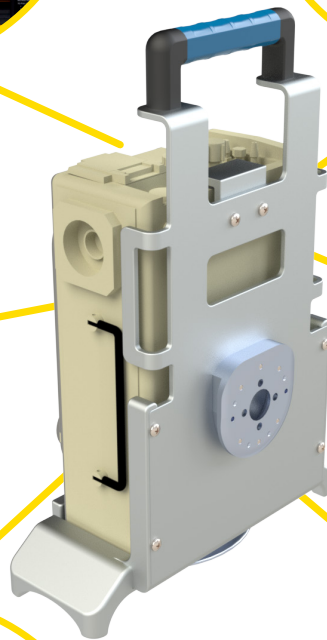
Safety Arm System



Standard Surface Base



Wall Mount Systems



# TECHNICAL SPECIFICATIONS

Product Name	Bracket Pro Serie® 26
Product Name	Dual disc bracket mounting system to secure the AEV®/EMV+® or Z-Vent® Ventilator on surfaces, cots/stretchers, floors and walls in emergency vehicles
Compatibility of Medical Device*	AEV®/EMV+® or Z-Vent® Ventilator by ZOLL® Medical Corporation
Environment of Usage	EMS/CCT (Ground & Air) – Hospital/Clinic, Military
Product Section Material	<ul style="list-style-type: none"><li>• Main Assembly: Aluminum 6061-T6</li><li>• Standard Bottom Disc: Aluminum 6061-T6 with 304 Stainless Steel Insert</li><li>• Anti-Rotation Micro Disc: Aluminum 6061-T6</li></ul>
Product Finish	<ul style="list-style-type: none"><li>• Main Assembly: Silver-Anodized Finish</li><li>• Standard Bottom Disc: Silver-Anodized Finish</li><li>• Anti-Rotation Micro Disc: Silver-Anodized Finish</li></ul>
Environmental Regulation	Complying with RoHS 3
Temperature of Usage	- 35° C to 45° C
Certification	Designed to Comply with: <ul style="list-style-type: none"><li>• SAE J3043 (26 G)</li><li>• FAA-FAR-DOT 27.561 &amp; DOT 27.562 (Flight)</li></ul>
Installation	Locking Mechanism without Screws
Attachment Options	2 Locking Discs – Standard Bottom Disc – Anti-Rotation Micro Disc
Transportation Compatibility System	Compatible with Technimount's: <ul style="list-style-type: none"><li>• Standard Surface Base</li><li>• Safety Arm System For Stryker Cots (PowerPro – XT and Mx-Pro)</li><li>• Floor Mount (Flight)</li><li>• Wall Mount System</li><li>• Safety MD Transporter</li></ul>
Features	<ul style="list-style-type: none"><li>• Robust Mounting Solution for EMS/CCT/ALS Transport</li><li>• Access to all Connectors and Accessories</li><li>• Locking Assembly Blocks supports use of the unit with or without the Transport Bag</li><li>• Multiple configuration options for transport</li><li>• Integrity of medical device respected</li></ul>
Physical Overall Dimensions	Width 11.81 in, Depth 7.465 in, Height 17.80 in
Weight	6.10 lb
Part Number	<ul style="list-style-type: none"><li>• 140-10-AEVZ – Bracket Pro Serie® 26</li><li>• 100-20-UN – Standard Surface Base</li></ul>
Other Models and Configuration Options	Contact Technimount EMS for more information or for other options at <a href="mailto:customerservice@technimount.com">customerservice@technimount.com</a>

\* Product and medical equipment manufacturers names are trademarks™ or registered trademarks® of their respective holders. Technimount does not have a commercial relationship with these medical equipment manufacturers.

# YOUR SAFETY IS OUR PRIORITY



## FEATURES

- ✓ Designed for the AEV®/EMV+® and Z-Vent® Ventilator by ZOLL® Medical Corporation
- ✓ Locking assembly blocks support the use of the unit with or without the Transport Bag from Zoll® Medical Corporation
- ✓ Standard Bottom Disc allows for 360° rotation when installed on the Standard Surface Base
- ✓ Anti-Rotation Micro Disc for vertical support on different wall and arm systems
- ✓ Compatibility with different stretcher, wall, floor, and surface mounting systems
- ✓ High-density aluminum with silver-anodized finish
- ✓ Compatible with all of Technimount's products

## BENEFITS

- + Multiple configurations increase flexibility in EMS/CCT Transport protocols
- + Easy access to all the Transport Bag pouches
- + Access to medical device from all angles (360° rotation on Technimount's Standard Surface Base)
- + Simple to install, easy access for maintenance and integrity of medical device respected
- + Quick installation and removal of bracket from Technimount's mounting systems
- + Certified mounting systems that is designed to comply with the highest industry standards and regulations, SAE J3043
- + Reduces risks of damage to the equipment and ensures the safety of patients and crew during EMS and Critical Care transport



## SAFETY AND FLEXIBILITY WHERE IT MATTERS MOST

[technimount.com](https://www.technimount.com)

