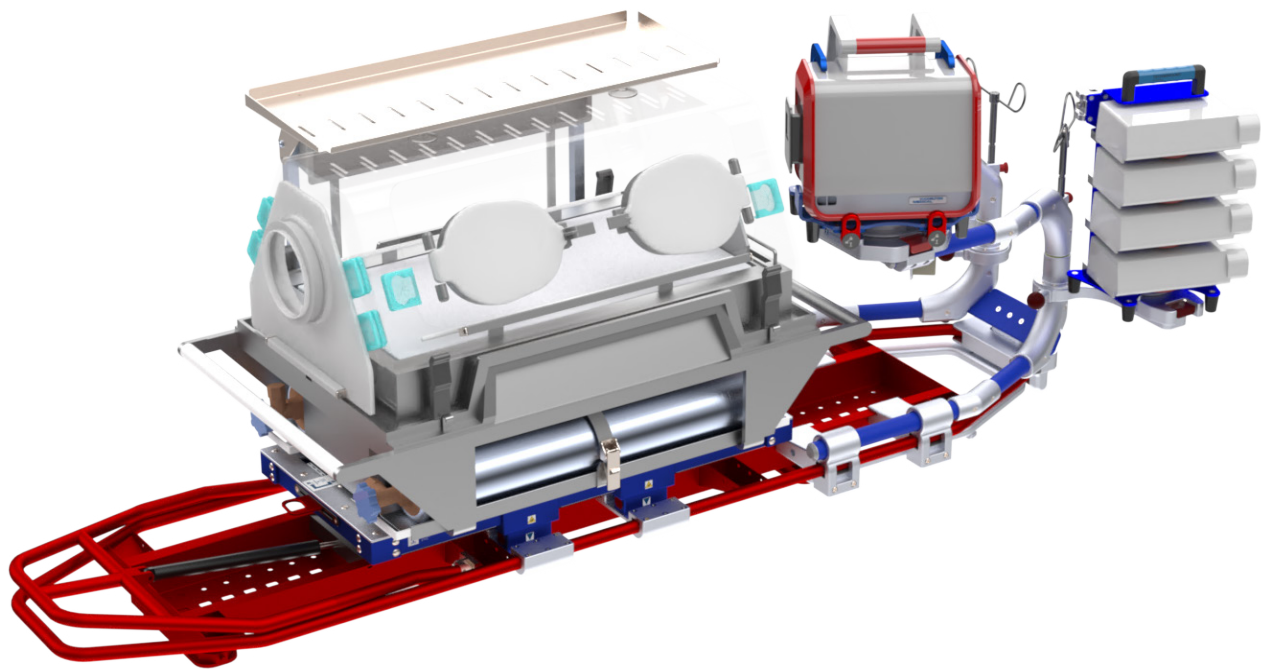




TECHNIMOUNT
EMS®

NEONATAL TRANSPORT INCUBATOR PLATFORM - FL

MOUNTING SOLUTION FOR DRÄGER ISOLETTE® TI500
INCUBATOR DURING AIR EMS TRANSPORT



SAFETY AND FLEXIBILITY
WHERE IT MATTERS MOST

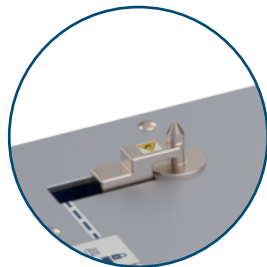
NEONATAL TRANSPORT INCUBATOR PLATFORM - FL

Product Components

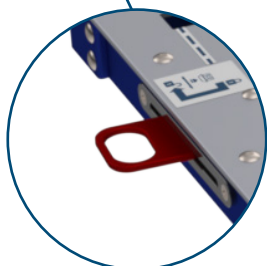
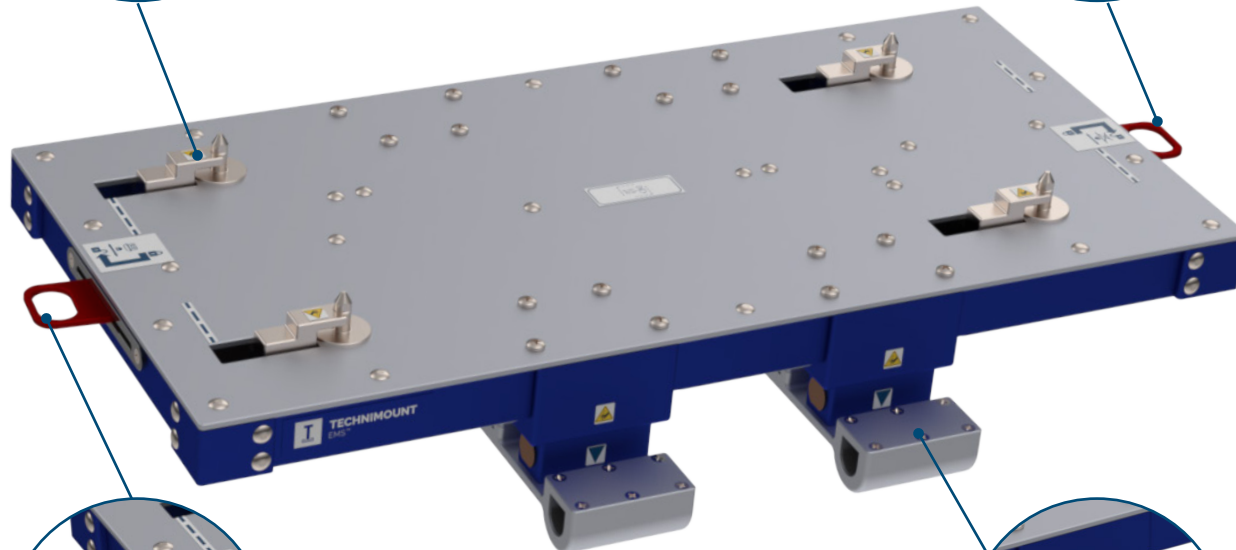
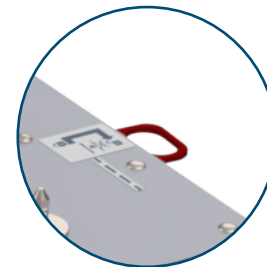
The Neonatal Transport Incubator Platform - FL is designed for the safe transport of the Dräger Isolette® TI500 on a LifePort AeroSled TS, during EMS air transport or interhospital transfers.

Equipped with quick release latches, it enables effortless installation and removal of both the incubator from the platform and the platform from the LifePort AeroSled TS. This solution provides EMS teams with exceptional flexibility, eliminating the need to allocate a dedicated adult/pediatric stretcher for neonatal transport.

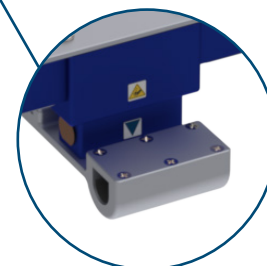
Incubator anchor



Quick release latch -
Incubator



Quick release latch -
Platform



XClamp™ - LP

NEONATAL TRANSPORT INCUBATOR PLATFORM - FL

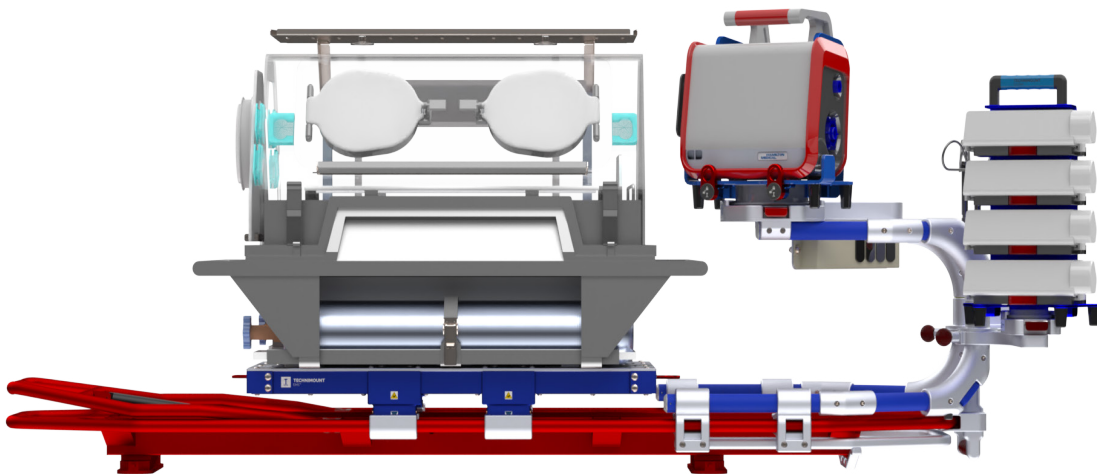
Highlights

FEATURES & BENEFITS

- Safe transport of the Dräger Isolette T1500 incubator during EMS air transport.
- Fluid interchangeability from an adult/pediatric stretcher, to a neonatal solution in seconds, using XClamp technology.
- Compatible with Technimount's Xtension Pro® Assistant - LP, enabling the transport of the incubator alongside essential medical devices needed for neonatal care.
- Incubator quick release latch for easy installation and removal of the incubator from the platform.
- Neonatal Transport Incubator Platform - FL quick release latch to efficiently remove the platform from the stretcher.
- Compact design tailored to the dimensions of the LifePort AeroSled TS, to respect limited aircraft space.
- Allows a continuum of care and increases newborn safety during EMS air transport.
- Tested in compliance with FAA, 14 CFR § 23 & 25 (applicable sections)

CONFIGURATIONS

The Neonatal Transport Incubator Platform - FL is designed for seamless compatibility with the Xtension Pro Assistant - LP. This allows neonates to be transported in an incubator alongside all the vital medical devices needed for their care.



NEONATAL TRANSPORT INCUBATOR PLATFORM - FL

Technical Specifications

Product Name	Neonatal Transport Incubator Platform - FL
Description	Mounting solution designed to aid trained EMS and clinical personnel securely move the Dräger Isolette® TI500 incubator that is essential to neonates during air EMS transport or interhospital transfers
Product Code	<ul style="list-style-type: none">• 2909-00-NTIP-FL (Neonatal Transport Incubator Platform - FL)• 2909-10-NTIP-FL (XClamp™ - LP clamp block)
Operating Environment	EMS/CCT (air)
Compliance	Tested in compliance with FAA, 14 CFR § 23 & 25 (applicable sections)
Expected Service Life	5 years
Compatible Stretcher	LifePort AeroSled TS, AS1-001
Compatible Mounting System	<ul style="list-style-type: none">• XClamp™ - LP clamp block• Xtension Pro® Assistant - LP
Compatible Medical Devices/ Accessories	Dräger Isolette® TI500
Dimensions (L X P X H)	<ul style="list-style-type: none">• Platform: 30.5 in. X 18.65 in. X 3.52 in. (77.47 cm X 45.72 cm X 7.52 cm)• XClamp™ - LP: 5.59 in. X 3.5 in. X 1.75 in. (14.2 cm X 8.89 cm X 4.45 cm)
Weight	<ul style="list-style-type: none">• Platform: 26.77 lb (12.14 kg)• XClamp™ - LP: 1.39 lb (0.45 kg), each (4X)
Composition	<ul style="list-style-type: none">• Platform: aluminum, stainless steel, bronze• XClamp™ - LP: aluminum, stainless steel
Total Safe Working Load (SWL)	150 lb (68.2 kg)
Operating Temperature	-31° F to 113° F (-35° C to 45° C)
Cleaning Solutions	<ul style="list-style-type: none">• Oxivir®, 5% Hydrogen Peroxide with Peracetic Acid (AHP)• Lavo® 12, 10 000 ppm Sodium Hypochlorite• TNT-100, 5% Quaternary Ammonium Compound• Spectro-Sept, 5% Ethyl Alcohol• Spectrol, 5% EDTA salt
Options	N/A

